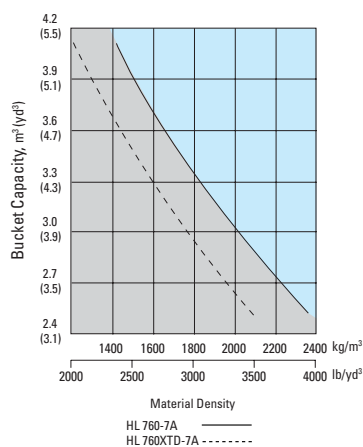


**Bucket Selection Guide**



**Supplemental Specifications**

Description	Change in operating weight kg(lb)	Change in static tipping load-straight kg(lb)	Change in static tipping load-40° turn kg(lb)
20.5-25 16PR L3	-872 (-1,922)	-670 (-1,477)	-591 (-1,303)
23.5-25 20PR, L5	+884 (+1,949)	+680 (+1,499)	+600 (+1,320)
23.5 R25 XHA*	+8 (+18)	+6 (+13)	+5 (+11)

**Standard Equipment**

- Electrical system**  
 Alternator, 70A  
 Alarms, audible and visual  
 - air filter clogging  
 - transmission error  
 - alternator voltage  
 - brake oil pressure  
 - engine oil pressure  
 - parking brake  
 - fuel level  
 - hydraulic oil temperature  
 - coolant temperature  
 - service brake oil pressure  
 Batteries, maintenance-free 950 CCA, 12V, (2)  
 Gauges  
 - engine coolant temperature  
 - fuel level  
 - hydraulic oil temperature  
 - speedometer  
 - transmission oil temperature  
 - voltmeter  
 Horn, electric  
 Indicator lights  
 - clutch cut-off  
 - high beam  
 - turn signal  
 - work light  
 LCD Display  
 - clock and fault code
- operating hour counter  
 - engine rpm  
 - transmission gear range indicator  
 - job time and distance  
 - temperature(coolant, hydraulic oil, t/m oil)  
**Lighting system**  
 - 2 dome lights  
 - 2 stop and tail lights  
 - 4 turn signals  
 - brake lights(counterweight)  
 - license plate light  
 - head light  
 2 on front tower  
 - working lights  
 2 on front roof  
 2 on grill  
**Switches**  
 - buzzer stop  
 - clutch cut-off  
 - hazard  
 - Ignition key, start/stop switch  
 - main light(illumination and head light)  
 - parking  
 - rear wiper & washer  
 - work light  
 - full automatic transmission  
 Starter, electric  
 Starting and charging system(24-volt)

- Cab**  
 Cab, ROPS/FOPS  
 (sound suppressed and pressurized) with:  
 - cigar lighter & ashtray  
 - coat hook  
 - front/rear window defroster  
 - intermittent wiper and washer, front and rear  
 - personal storage space:  
 console box  
 cool & hot box  
 holder, can and cup  
 - rear view mirrors (2 inside)  
 - rear view mirrors (2 outside)  
 - seat belt, 2" static  
 - seat, adjustable suspension with armrests  
 - steering column, tilt and telescopic  
 - steering wheel with knob  
 - sunvisor(front window)  
 - tinted safety glass  
 - two door cab, fixed glass  
 Magazine box  
 Pedals  
 - one accelerator pedal  
 - one brake pedal  
 Rubber floor mat  
 Wrist rest  
**Engine**  
 Antifreeze  
 Engine, Cummins QSB6.7
- Low Emission Diesel, Tier-III  
 Engine enclosure, lockable  
 Engine fuel priming pump  
 Fan guard  
 Fuel/water separator  
 Muffler, under hood with large exhaust stack  
 Pre-cleaner, engine air intake  
 Radiator  
 Starting aid (air intake heater)  
 Water sensor on fuel filter  
 Fuel warmer  
**Power Train**  
 Brakes : Service, enclosed wet-disc  
 Differential, torque proportioning (front/rear)  
 Parking brake  
 Torque converter  
 Transmission, computer-controlled, electronic soft shift, auto-shift and quick-shift features included  
 Transmission oil cooler  
**Hydraulics**  
 Boom lock safety valve  
 Boom kickout, automatic  
 Bucket positioner, automatic  
 Diagnostic pressure taps  
 Hydraulic oil cooler  
 Hydraulic system,  
 - 2 spool, single lever, pilot control for boom and bucket actuation

- Steering, load-sensing  
 Remote cooling fan,  
 hydraulically-driven,  
 temperature sensing type  
**Others**  
 Articulation locking bar  
 Coolant level sight gauge  
 Counterweight  
 Door and cab locks, one key  
 Doors, service access(locking)  
 Drawbar with pin  
 Engine oil level dipstick gauge  
 Ergonomically located and slip resistant, left & right  
 - handrails  
 - ladders  
 - platforms  
 - steps  
 Fenders(front/rear)  
 Guard, bucket cylinder rod  
 Hydraulic oil level sight gauge  
 License plate bracket  
 Lift and tie-down hooks  
 Loader linkage, sealed Z-bar design  
 Steering stops, cushioned  
 Tires(23.5-25, 20PR,L3)  
 Transmission oil level dipstick gauge  
 Vandalism protection caplocks

**Optional Equipment**

- 24-volt to 12-volt DC converter  
 Air condition :  
 - air conditioner  
 - air conditioner with heater  
 - heater  
 Alarm, back-up  
 Battery master switch  
 Beacon light, rotating  
 CD player  
 Cutting edge, bolt-on type  
 Differential, limited slip (front/rear)  
 Emergency steering system  
 Fire extinguisher  
 High lift arrangement with optional counterweight, 1630kg (3590 lb)  
 Hourmeter  
 Hydraulic control, 2 lever  
 Hydraulic control, 3 lever  
 Hydraulic arrangement 3-valve  
 Joystick with travel switch

- Lighting, auxiliary, 4 on roof  
 Mud guard  
 Open Canopy (NONE-ROPS)  
 Operator suit  
 Radio cassette player  
 Rear view Mirror-heated  
 Reversible cooling fan  
 Ride control system  
 Seat  
 - 2" static seat belt & adjustable mechanical suspension(vinyl)  
 - 3" static seat belt & adjustable mechanical suspension  
 - 3" retractable seat belt & adjustable air suspension  
 Tires :  
 - 20.5 - 25, 16PR, L3  
 - 23.5 - 25, 20PR, L5  
 - 23.5 R25 XHA\*  
 Tool kit

- Tooth, 1 piece, bolt-on type  
 Tooth, 2 pieces, bolt-on type  
 Guards  
 - crankcase  
 - transmission  
 Wheel chock  
 Window, sliding (left and right side)

Standard and optional equipment may vary. Consult your Hyundai dealer for more information. The machine shown may vary according to territorial specification.

**NEW 7 SERIES**

**HL 760-7A** Tier III Engine

**HYUNDAI WHEEL LOADER**

- Cummins QSB6.7 Engine
- Gross Power : 215 HP(160 kW) / 2,100rpm
- Max. Power : 217 HP(162 kW) / 1,900rpm
- Bucket Capacities : 2.7 to 3.1 m³ (3.5 to 4.0 yd³)
- Operating Weight : 17,900 kg (39,460 lb)



**Head Office** (Sales Office)  
 1 CHEONHA-DONG, DONG-KU, ULSAN, KOREA  
 Tel: (82) (52) 230-7970, 7729 Fax: (82) (52) 230-7979, 7720  
**U.S. Operation**  
 Hyundai Construction Equipment U.S.A., Inc.  
 955 ESTES AVENUE, ELK GROVE VILLAGE IL, 60007  
 Tel: (1) 847-437-3333 Fax: (1) 847-437-3574  
**European Operation**  
 Hyundai Heavy Industries Europe N.V.  
 VOSSENDAAL 11, 2440 GEEL, BELGIUM  
 Tel: (32) 14-562200 Fax: (32) 14-593405 - 06

**PLEASE CONTACT**

ООО "Техномир"  
 664024 Россия, Иркутская область,  
 г. Иркутск, ул. Трактовая, д.18а оф.12.  
 www.hyundai-mir.ru  
 (3952) 722-735, (3952) 722-745, (3952) 722-785







# Hardworking Hyundai Loaders

■ Photo may include optional equipment.

## *New Generation - HL760-7A*

Meet the new generation wheel loader in Hyundai.

The HL760-7A will give you the satisfaction in higher power.  
Lower fuel consumption, more comfort and lower emission .

Come and experience what Hyundai has created for you by bringing power and technology.



### Engine

- Electronic Engine Control System
- Engine Protection & Selfdiagnosis System
- Max Power 217 HP

### Transmission

- 2 Automatic Selection Mode
- 2 Kick Down Function Mode
- AEB Function





New Generation, Innovative Solution in Construction **HL760-7A**

**The Centralized Display & Switch Panel**

The centralized digital display shows the status and conditions of your machine at a glance. Easy-to-read gauges with an instrument panel provide constant, and accurate information.



**Control Center**

The all-new, deluxe operating space was engineered with 3-D modeling for your ultimate control center. The wide, tinted and laminated front windshield has no framing cutting through to ensure excellent visibility.

**Adjustable steering column**



**Joystick Controls**

Pilot-operated controls for bucket operation by Joystick are easy and comfortable to operate. A new Joystick Lever with travel switch on the top allows operator to change the direction of travel and kick-down shifting including bucket controls (Option)



**The Air Conditioning and Heating System**

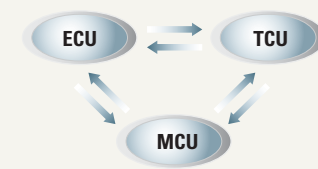
The operator can easily control the temperature and air flow. The defroster on the front windshield and rear window makes it convenient for winter working usage.

**Full automatic shift lever**



A single lever on the left side of the steering column gives the operator fast, easy control of speed and direction. Push the lever forward to go forward, pull it back for reverse. Travelling is automatically changed from 1st stage to given stage according to travel speed and tractive effort. The operator can select two kinds of automatic modes (1st ↔ 4th, 2nd ↔ 4th). These exclusive features contribute to a step-up in productivity and reduction of operator's fatigue.

**Up-to-Date-technology CAN System**

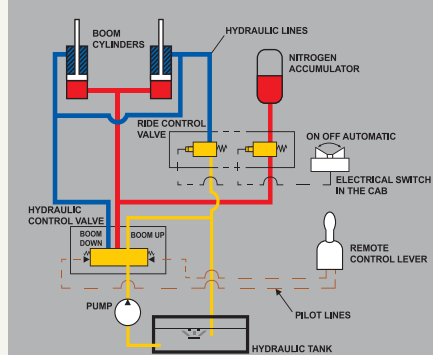


Engine control Unit(ECU), Trans-mission control Unit(TCU) and Machine control Unit(MCU) realize the optimal performance through the mutual CAN communications.

- ① Power Outlet & Cigar Jack
- ② Cup Holder & Console Box
- ③ Magazine Box



**Ride control system (optional)**



Ride control system functions as shock absorbers and gives smooth operation without losing of the load even over rough terrain condition. So the system allows faster travelling and improved safety and productivity.





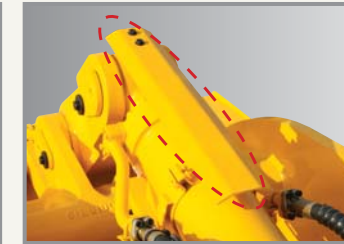
Photo may include optional equipment.

## A Well Rounded System

Maximize the productivity of your business with HL760-7A. With our vast experience in the production of construction equipment, Hyundai is able to meet the demands of consumers.



**Left and right access door**



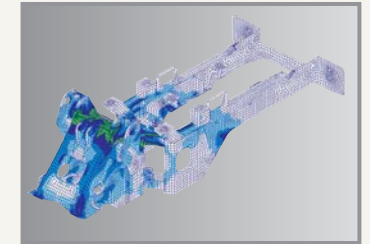
**Bucket cylinder guard**

This guard helps to prevent possible damage from load material.



**Wear plate**

This close up shows the protective plating found underneath the rear of the bucket and is used to prevent excess wear when digging into material.



**High-rigidity frames**

Front and rear frames are designed for work in the toughest applications to provide high rigidity for the power train and loader equipment. The high-rigidity frames, together with the reinforced loader linkage, resist loading stress and shock.

New Generation, Innovative Solution in Construction **HL760-7A**



Photo may include optional equipment.

## CUMMINS QSB6.7



The CUMMINS QSB6.7 electronic control engine combines full-authority electronic controls with the reliable performance. The combination of improved airflow and evenly dispersed fuel results in increased power, improved transient response and reduced fuel consumption. And the QSB6.7 used advanced electronics controls to meet the emission standards (EPA Tier III, EU Stage III)



**Battery master switch (Option)**

A master switch disconnects the battery power to protect the electrical system from excess electrical drainage.



**Sealed loader linkage**

Fully protected fitting is and the sealed loader linkage with dust seals and o-ring will extend lubrication intervals remarkably.



**Frame lock**

Machine can be locked by this locking bar to prevent movement during transportation.

## Multi Function Transmission



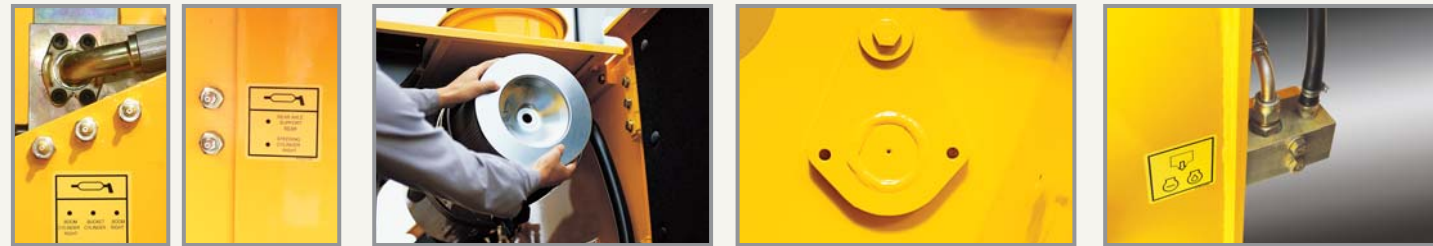
The newly developed transmission control represents the beating heart of transmission. The hydraulic system for gearshifts is working with proportional valves, which allow a very precise control of the clutches. For each gearchange, the control unit performs a monitoring function to ensure the specified shift curve is adhered to, and readjusts the shift pressure applied to the clutches accordingly. This results in smooth gearshifts-even under load-with no traction interrupt. This helps to avoid standstill of the vehicle, sudden load changes and torque peaks under all conditions, for example application on steep terrain with full load. In addition, there is the option for the driver to make gearshifts manually.



# Accessible and Serviceable

New Generation, Innovative Solution in Construction **HL760-7A**

An ideal arrangement of component parts ensures easy access and convenience for maintenance. Highly accessible engine compartment assures fast and efficient maintenance.



### Accessible grease fittings

Grease fittings are highlighted and available around the machine for the fast access when doing your service checks.

### Simple air filter replacements

The air cleaner is easily replaceable by turning the wing nut on the outer shell counterclockwise.

### Open pin access

You can more readily remove or tighten your front attachment pin with these open connectors surrounding the pin.

### Remote type drain port

It is now easier to change your engine oil, coolant and hydraulic oil with the remote drain port.



### Hydraulic tank

The hydraulic tank is located behind the cab to increase the accessibility of hydraulic hoses and pipings.

### Oil sight gauge

The hydraulic oil check sight gauge is installed on the side of the hydraulic tank for the convenient checks from ground level.

### Transmission oil port

The transmission oil change port is also located for with open accessibility and comes with an anti-vandalism lock for your machine protection.



Photo may include optional equipment.



### Central electric controllers & Fuse Box

Electric controllers for Hyundai loader are centralized to improve serviceability. A concentrated fuse box for easy inspection.

### Cabin Air Fresh Filter

The internal pressure is maintained to be slightly higher than that of outside to exclude dust and to reduce noise levels.

### Coolant Sight Gauge

The coolant sight gauge is installed on the top of radiator for convenient checks of coolant level.

### Easy Access to All Engine Accessory

Here you find the engine oil check, and the main and pre-filters. The large access engine-side-panels permit easy and safe inspections. The fuel and oil filters can be spun on and off for quick replacements.



### Up-to-date hydraulic remote cooling fan



The minimum fuel consumption and low noise is realized by applying hydraulic cooling fan sensing coolant temperature, intake air temperature, transmission oil temperature and hydraulic oil temperature. (Option)



## Specification

### Engine

<b>Maker/Model</b>	CUMMINS QSB6.7	<b>Bore x Stroke</b>	104 mm (4.1") x 132 mm (5.2")
<b>Type</b>	4-cycle, turbocharged, charge aircooled direct injection, electronic controlled diesel engine	<b>Displacement</b>	6.7 ℓ (409 cu in)
<b>Gross power</b>	215HP(160 kW) / 2,100rpm	<b>Compression ratio</b>	17.2 : 1
<b>Net power</b>	205HP(153 kW) / 2,100rpm	<b>Air cleaner</b>	Dry, dual elements
<b>Maximum power</b>	217HP(162 kW) / 1,900rpm	<b>Alternator</b>	24V, 70 Amp
<b>Maximum torque</b>	97kg·m(700 lb-ft) / 1,500rpm	<b>Battery</b>	2 x 12V, 130 Ah.
<b>No. of cylinders</b>	6	<b>Starting motor</b>	24V, 3.7 kW

※ Net power output of standard engine as installed in this vehicle(per SAE J1349) complete with fan, air cleaner, alternator, water pump, lubricating oil pump and fuel pump. No derating for continuous operating required up to 3048m (10000ft). This engine meets the EPA(Tier III) / EU(Stage III-A) Emission regulation.

### Transmission

<b>Torque converter type</b>	3-elements, single-stage single-phase	<b>Forward</b>	6.2(3.9)
<b>Stall torque ratio</b>	2.813 :1		11.7(7.3)
<b>Travel speed km/h (mph)</b>	23.5-25, L3		22.3(13.9)
			34.3(21.3)
		<b>Reverse</b>	6.6(4.1)
			12.3(7.6)
			23.3(14.5)

※ Full automatic power shift, countershaft type with soft-shift in range and direction. Properly matched torque converter to engine and transmission for excellent working ability

### Axles

<b>Drive system</b>	Four-wheel drive system	<b>Hub reduction</b>	Planetary reduction at wheel end
<b>Mount</b>	Rigid front axle and oscillating rear axle	<b>Differential</b>	Torque proportional differential
<b>Rear axle oscillation</b>	± 12° (total 24°)	<b>Reduction ratio</b>	24.685

### Hydraulic System

<b>Type</b>	Open-centered, tandem circuit system. Pilot-operated controls. Closed with pressure and vacuum relief.	<b>Bucket Controls</b>	
<b>Pump</b>	Helical gear type, 280 liters/min (74 gal/min)@governed rpm	<b>Type</b>	Pilot operated lift and tilt circuit, single-lever(joystick) control standard.
<b>Control Valve</b>	Two function valve with single or two lever controls : Optional third-function valve with auxiliary lever.	<b>Lift Circuit</b>	The valve has four functions ; raise, hold, lower and float. Can adjust automatic kickout from horizontal to full lift.
<b>Relief Valve Setting</b>	210 kg/cm <sup>2</sup> (2,990 psi)	<b>Lift Circuit</b>	The valve has three functions ; tilt back, hold and dump. Can adjust automatic bucket positioner to desired load angle.
<b>Pilot System Type</b>	Pilot oil pressure is generated by the pilot oil supply unit.	<b>Cylinder</b>	Type : Double acting No. of cylinders-bore x stroke; Lift 2-160 mm(6.3") x 757 mm(29.8") Tilt 1-180 mm(7.1") x 530 mm(20.9")
<b>Relief Valve Setting</b>	30 kg/cm <sup>2</sup> (427 psi)	<b>Cycle Time</b>	Raise : 6.2 sec (with load) Dump : 1.3 sec Lower : 3.0 sec (empty) Total : 10.5 sec

## Specification

### Brakes

<b>Service Brakes</b>	Hydraulically actuated, wet disc brakes actuate all 4 wheels independent axle-by-axle system. Single pedal braking including clutch cut off switch.
<b>Parking Brake</b>	Spring-applied, hydraulically released disc brake on front axle input shaft
<b>Emergency Brake</b>	When brake oil pressure drops, indicator light alerts operator and parking brake automatically applies.

### Steering System

<b>Type</b>	Full hydraulic power steering
<b>Pump</b>	Helical gear type, 140 liters/min (37.0 gal/min)
<b>Relief Valve Setting</b>	210 kg/cm <sup>2</sup> (2,990 psi)
<b>Cylinder</b>	Type Double acting Bore x Stroke 80mm(3.1") x 440mm(17.3")
<b>Steering Angle</b>	40°(each direction)

#### Features

- Center-point frame articulation.
- Load-sensing, pressure-compensated system.
- Steering-wheel operated metering pump controls flow to steering cylinders.
- Tilt and telescopic steering column.

### Service Refill Capacities

<b>Fuel tank</b>	330 liters (87 USgal)
<b>Cooling system</b>	39 liters (10.3 USgal)
<b>Crankcase</b>	18 liters (4.8 USgal)
<b>Transmission</b>	32 liters (8.5 USgal)

<b>Front axle</b>	45 liters (11.9 USgal)
<b>Rear axle</b>	40 liters (10.6 USgal)
<b>Hydraulic tank</b>	150 liters (39.7 USgal)
<b>Hydraulic system (including tank)</b>	260 liters (68.7 USgal)

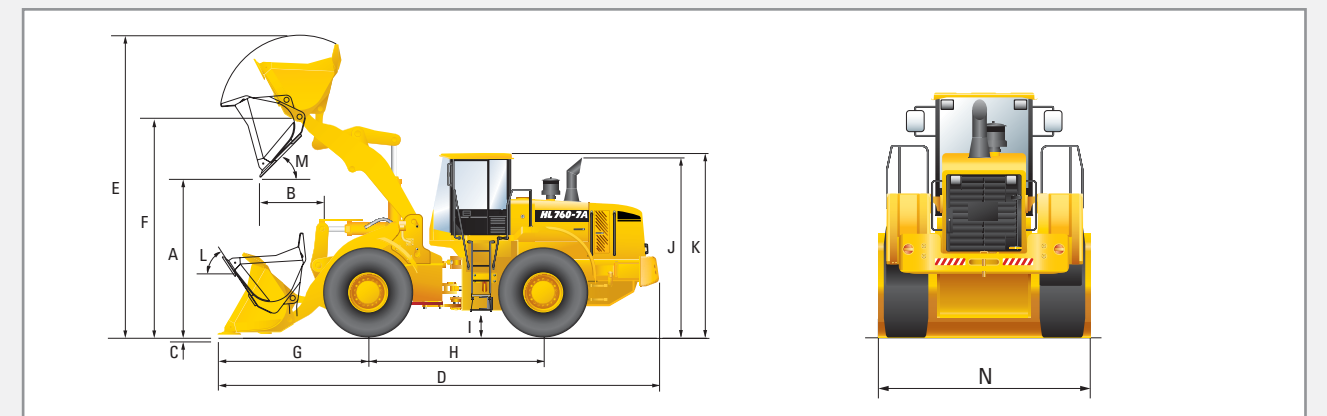
### Overview

Description	UNIT	HL760-7A	HL760XTD-7A
Operating weight	kg (lb)	17,900 (39,460)	18,700 (41,230)
Bucket capacity	Heaped	m <sup>3</sup> (yd <sup>3</sup> ) 3.1 (4.0)	3.1 (4.0)
	Struck	m <sup>3</sup> (yd <sup>3</sup> ) 2.7 (3.5)	2.7 (3.5)
Breakout force-bucket	kg (lb)	15,950 (35,160)	15,650 (34,500)
	kg (lb)	13,840 (30,510)	12,280 (27,070)
	kg (lb)	12,100 (26,680)	10,570 (23,300)

### Tires

<b>Type</b>	Tubeless, loader design tires
<b>Standard</b>	23.5-25, 20 PR, L3
<b>Options include</b>	20.5-25, 16 PR, L3 23.5-25, 20 PR, L5 23.5 R25 XHA*

## Dimensions



Description	UNIT	HL760-7A	HL760XTD-7A
<b>Bucket Type</b>	General purpose bolt-on cutting edge		
<b>A. Dumping clearance at max. height and 45° dump angle.</b>	mm (ft-in)	3,000 (9' 10")	3,490 (11' 5")
<b>B. Reach</b>	Full lift	mm (ft-in) 1,190 (3' 11")	1,215 (4')
	7ft height	mm (ft-in) 1,720 (5' 8")	2,180 (7' 2")
<b>C. Digging depth</b>	mm (in)	90 (3.5")	90 (3.5")
<b>D. Overall length</b>	on ground	mm (ft-in) 8,060 (26' 5")	8,620 (28' 3")
	at carry	mm (ft-in) 8,000 (26' 3")	8,580 (28' 2")
<b>E. Overall height (fully raised)</b>	mm (ft-in)	5,540 (18' 2")	6,030 (19' 9")
<b>F. Bucket pivot max. height</b>	mm (ft-in)	4,150 (13' 7")	4,610 (15' 1")

Description	UNIT	HL760-7A	HL760XTD-7A
<b>G. Front overhang</b>	mm (ft-in)	2,745 (9')	3,210 (10' 6")
<b>H. Wheelbase</b>	mm (ft-in)	3,300 (10' 10")	3,300 (10' 10")
<b>I. Ground clearance</b>	mm (ft-in)	420 (1' 5")	420 (1' 5")
<b>J. Height over exhaust</b>	mm (ft-in)	3,210 (10' 6")	3,210 (10' 6")
<b>K. Height over cab</b>	mm (ft-in)	3,440 (11' 3")	3,440 (11' 3")
<b>L. Roll-back angle</b>	on ground	deg	42
	at carry	deg	47
<b>M. Dump angle</b>	deg	47	47
<b>Clearance circle</b>	mm (ft-in)	13,360 (43' 10")	13,800
<b>N. Overall width</b>	mm (ft-in)	2,900 (9' 6")	2,900 (9' 6")