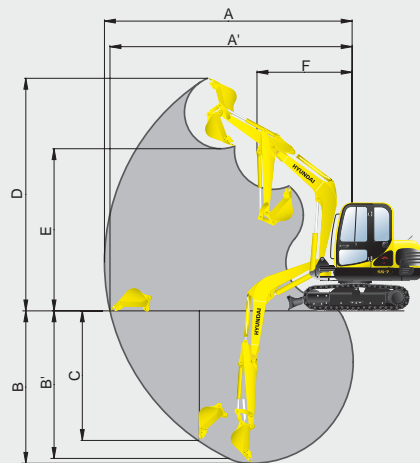
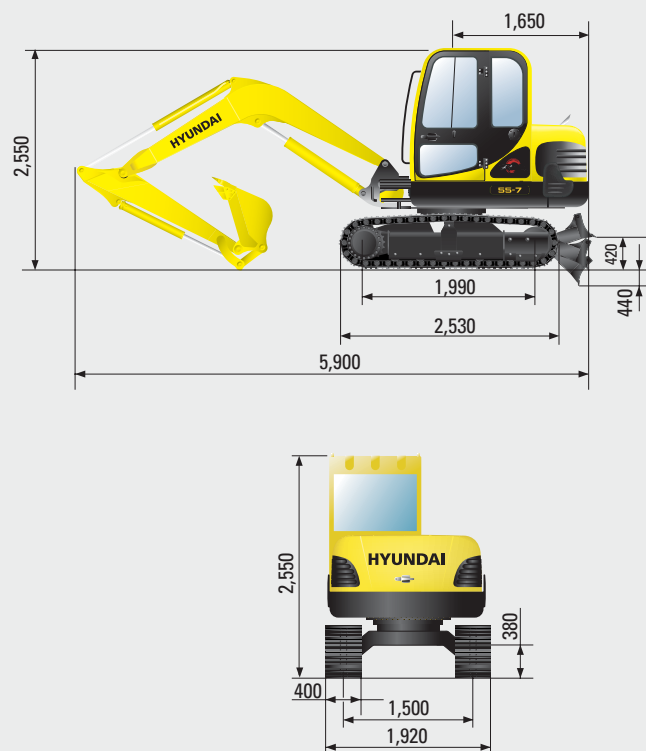


Working ranges



Boom length	3,000 mm(9' 10")	
Arm length	1,600 mm(5' 3")	1,900 mm(6' 3")
A Max. digging reach	6,150 mm(20' 2")	6,400 mm(21' 0")
A' Max. digging reach at ground	6,010 mm(19' 9")	6,270 mm(20' 7")
B Max. digging depth	3,820 mm(12' 6")	4,060 mm(13' 4")
B' Max. digging depth(8ft level)	3,420 mm(11' 3")	3,700 mm(12' 2")
C Max. vertical wall digging depth	3,200 mm(10' 6")	3,460 mm(11' 4")
D Max. digging height	5,780 mm(18' 12")	5,920 mm(19' 5")
E Max. dumping height	4,050 mm(13' 3")	4,180 mm(13' 9")
F Min. front radius	2,350 mm(7' 9")	2,360 mm(7' 9")

Dimensions



Standard Equipment

ISO standard cabin

- Cabin ROPS(ISO 3471)
- FOPS(ISO 3449)
- TOPS(ISO 12117)
- All-weather steel cab with all-around visibility
- Safety glass windows
- Sliding fold-in front window
- Sliding side window
- Lockable door
- Accessory box & Ash-tray

Heater & Defroster

Centralized monitoring

- Engine speed
- Gauges
- Fuel level gauge
- Engine coolant temperature gauge
- Warning
- Engine coolant & Fuel level
- Engine oil pressure
- Engine coolant temperature
- Hyd. oil temperature
- Low battery
- Air cleaner closing

Door and cab locks, one key

AM/FM radio and cassette

Two outside rear view mirrors

Fully adjustable suspension seat with seat belt

Console box tilting system(LH.)

Four front working lights

Electric horn

Battery (1 x 12 V x 100 AH)

Battery master switch

12 volt power supply(DC-DC converter)

Removable clean out screen for radiator

Automatic swing brake

Removable reservoir tank

Water separator, fuel line

Counterweight (210 kg, 460 lb)

Mono boom (3.0 m, 9'10")

Arm (1.6 m, 5' 3")

Track shoes (400 mm, 15.7")

Track rail guard

Optional Equipment

Air-conditioner(4000 kcal/hr, 16000BTU/hr)

Fuel filler pump(35 l /min, 9.2 US gpm)

Beacon lamp

Safety lock valve for boom cylinder

Single acting piping kit(breaker, etc)

Double acting piping kit(clamshell, etc)

Accumulator, work equipment lowering

Electric transducer

Travel alarm

Quick coupler

Rubber crawler (400mm, 15.7")

Narrow bucket(0.07m³, 0.09yd³)

Arm (1.9m)

Tool kit

Operator suit

Standard and optional equipment may vary. Contact your Hyundai dealer for more information. The machine shown may vary according to International standards. All US measurement are rounded off to nearest pound or inch.

HYUNDAI
HEAVY INDUSTRIES CO.,LTD.
CONSTRUCTION EQUIPMENT DIVISION

HEAD OFFICE
(Sales Office) 1 CHEONHA - DONG, DONG-KU, ULSAN, KOREA
TEL : (82)(52)230-7970, 7729 FAX: (82)(52)230-7979, 7720

U.S. Operation Hyundai Construction Equipment U.S.A., Inc.
955 ESTES AVENUE ELK GROVE VILLAGE IL, 60007
TEL : (1)847 - 437 - 3333 FAX : (1)847 - 437 - 3574

European Operation Hyundai Heavy Industries Europe N.V.
VOSSENDAAL 11, 2440 GEEL, BELGIUM
TEL : (32)14 - 562200 FAX: (32)14 - 593405 - 06

PLEASE CONTACT
OOO "Техномир"

664024 Россия, Иркутская область,
г. Иркутск, ул. Тракторная, д.18а оф.12.

www.hyundai-mir.ru

(3952) 722-735, (3952) 722-745, (3952) 722-785

www.hyundai-ce.com

2004. 11 Rev 0.

Building a better future
Global Leader

NEW

55-7

Robex

NEW 7 SERIES MINI EXCAVATOR

Yanmar 4TNV94L Engine **40kW/53HP**

Operating weight **5,700kg (12,570 lb)**

Bucket capacity, SAE **0.06~0.18m³(0.08~0.24yd³)**



Photo may include optional equipment.

HYUNDAI
HEAVY INDUSTRIES CO.,LTD.

Hyundai Robex 55-7

Maximized Workability

Comfortable Operating Environment

Advanced Hydraulic System

Enhanced Durability & Reliability

Improved Fuel Efficiency



■ Photo may include optional equipment.

Technology in Cab Design

Wide, Comfortable Operating Space

All the controls are designed and positioned according to the latest ergonomic research. Reinforced pillars have also been added for greater cab rigidity.



Reliable Instrument Panel

All information from the devices such as engine RPM, engine water temp, fuel status and the state of all types of electric switches provide the operator with an exact condition of machine. This feature makes troubleshooting much easier.

Various Storage Spaces Inside Cabin



Radio & Cassette Player

Standard Deluxe radio & cassette player are installed.



Convenient and Comfortable Space



Wide Cab with Excellent Visibility

The cab is roomy and ergonomically designed with low noise level and good visibility. A full view front window and large rear and side windows provide excellent visibility in all directions.

High-output Air Conditioner & Heater

Large capacity air conditioning system is installed for operator's comfort in all climate. For more convenience, the cab is equipped with defroster for the cold seasons.

Sensitive Joystick and Easy Entrance

New joystick grips for precise and convenient control. The large door allows the operator to enter and exit easily.

Sliding Side Window

The sliding side window provides more convenience for the operator without having to opening the door.



Big Sized Sun Visor & Top Glass

The big sun visor and top glass are installed on the top of the front window to block direct sunlight and increase operator's visibility.
■ Top Glass : Bronze color and laminated glass

Rise-up Wiper

Rise-up wiper gives better front view to operator.

Easy to Open Front Window

Sliding fold-in front window is easily opened and safely maintained in open position to improve the working condition.

Smooth Travel Pedals and Foot Rests

Travel pedals and levers are equipped with ergonomically designed foot rests. It enables the operator to work easily and quickly.

**Unparalleled Technology of R55-7.
It will fulfill your dreams**



■ Photo may include optional equipment.

The Highest Engine Power in its Class Tier II

YANMAR 4TNV94L

53 HP / 2,200 rpm

Yanmar 4TNV94L engine provides 20.6 kgf-m (149 lbf-ft) of maximum torque with 53 HP at 2,200rpm of rated power. This means the R55-7 runs with the most power in its class, giving you more power to get the job done.



Powerful & Dynamic Work !

Hyundai Mini Excavator R55-7



■ Photo may include optional equipment.

Powerful and Dynamic Work!



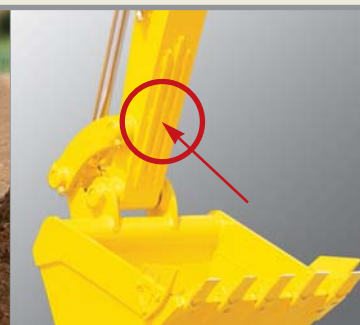
Exceptional Traction and Lifting Capacity

The considerable traction and lifting capacity enable all work to be done quickly.



Reinforced Bucket

The design includes bucket link durability and anti-wear characteristics with additional reinforcement plates on cutting edge section. Reinforced bucket is made with thicker steel and additional lateral plate.



Reinforced Arm

Reinforcements are welded to protect the arm from impacts and wear.



Slope-type Side Member

Applied slope type side member prevents soil stocking and extends life of the machine.



Impressive Gradeability

35 degree(70%) of high gradeability and long tumbler distance may be easier to work at slope area.



Centralized Grease Fittings

Grease fittings are highlighted and centralized for fast access when doing your service checks. Save time and money during routine maintenance.



Installation for Breaker Operation

Overload relief valve and pipes are installed as standard for customer's convenience.



Offset Boom Swing

The R55-7 is designed for efficient work in congested residential and urban areas. The boom can be offset within a range of 130 degrees.

Increased Higher Performance and Durability

Strong and Stable Lower Frame

Reinforced box-section frame is all welded with low-stress and high-strength. It guarantees safety and resistance through high tensile strength steel panels, with highly durable upper and lower rollers and track guards against external impact when driving on rough terrain.



■ Photo may include optional equipment.

Performance and Durability

<p>Arrangement Between Bucket and Blade</p> <p>The bucket is designed to minimize the gap with blade. This feature improves working efficiency in grading.</p>	<p>Powerful Dozer Blade</p> <p>Large size blade improves work efficiency and equipment durability .</p>	<p>Tough, Durable Undercarriage</p> <p>The R55-7 has an undercarriage constructed with tough, durable, robotically-welded steel. Tapered, upper roller side supports were installed to keep tracks properly aligned at all times.</p>

<p>Rectangular Tube Cabin</p> <p>The cabin style protects the operator against falling objects, ensuring operator safety. (ROPS, FOPS, TOPS STD.)</p>	<p>FEM(Finite Element Method)</p> <p>Durability of structure is proven through FEM(Finite Element Method) analysis and long term durability test.</p>	<p>Applied Side Protector</p> <p>When the machine turns, the side protector prevents any damage to engine hood.</p>	<p>Large Capacity Radiator</p> <p>To improve the performance in oveload or continual work, large capacity radiator was installed.</p>



Reliability and Serviceability

■ Photo may include optional equipment.

Reliability and Serviceability



Easy to Maintain Engine Components

The R55-7 was built with accessibility in mind. All doors, covers and hoods were built for complete open access. You'll find that the R55-7 offers plenty of space to complete your regular maintenance and service hassle-free.



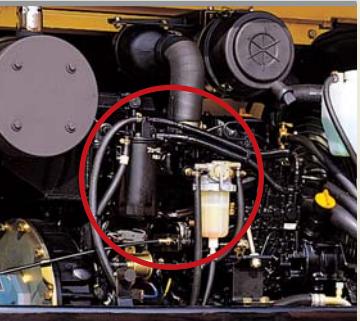
Easy Change Air Cleaner

The R55-7 is fitted with durable plastic air cleaner for easy maintenance and quick service.



Easy to Fill up with Fuel(Optional)

The Fuel filler pump provide easy filling of fuel tank from other tanks by electric device.



High Capacity Water Separator & Fuel Filter

To protect the injection system and minimize the risks of fuel breakdowns, high capacity fuel filter and transparent water separator is applied for durability.



Centralized Fuse Box

Fuse box is arranged on the rear of seat for easy service.



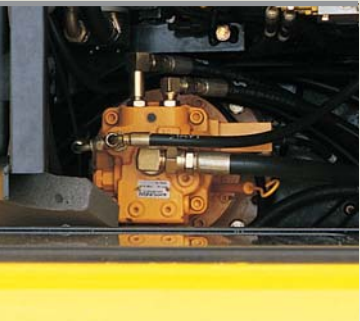
Large Capacity Fuel and Hydraulic Tank

The capacity of fuel and hydraulic tank is increased to extend the working time.



Battery Master Switch

The battery master switch enables checking and maintaining the battery while minimizing the discharge of battery.



Powerful and Precise Swing Control

Improved shock absorbing characteristics makes stopping a precise and smooth action.

Specifications



Engine

Model			Yanmar 4TNV94L
Type			Water cooled, 4 cycle Diesel 4 cylinders in line, direct injection, low emission
Rated flywheel horse power	SAE	J1995 (gross)	53 HP (40 kW) at 2200 rpm
		J1349 (net)	52 HP (39 kW) at 2200 rpm
	DIN	6271/1 (gross)	54 PS (39 kW) at 2200 rpm
		6271/1 (net)	53 PS (39 kW) at 2200 rpm
Max. torque			20.6 kgf-m (149 lbf-ft) at 1400 rpm
Bore x stroke			94 mm (3.70") x 110 mm (4.33")
Displacement			3054 cc (186 cu in)
Battery			1 x 12 V x 100 AH
Starter motor			12V-3.0 kW
Alternator			12V-55 A



Hydraulic System

Main pump	
Type	Two Variable displacement piston pumps
Rated flow	2 x 55 ℓ /min(14.5 US gpm/12 UK gpm)
Sub-pump for pilot circuit	Gear pump
Hydraulic motors	
Travel	Two speed axial piston motor with counter balance valve and parking brake
Swing	Axial piston motor with automatic brake
Relief valve setting	
Implement circuits	220 kgf/cm ² (3130 psi)
Travel circuit	220 kgf/cm ² (3130 psi)
Swing circuit	215 kgf/cm ² (3060 psi)
Pilot circuit	30 kgf/cm ² (430 psi)
Service valve	Installed
Hydraulic cylinders	
No. of cylinder-bore x rod x stroke	Boom : 1 - 110 x 65 x 715 mm (4.3" x 2.6" x 28.1")
	Arm : 1 - 90 x 55 x 850 mm (3.5" x 2.2" x 33.5")
	Bucket : 1 - 80 x 50 x 660 mm (3.1" x 2.0" x 26.0")
	Boom swing : 1 - 95 x 50 x 527 mm (3.7" x 2.0" x 20.7")
	Dozer blade : 1 - 110 x 50 x 191 mm (4.3" x 2.0" x 7.5")



Drives & Brakes

Drive method	Full hydrostatic type
Drive motor	Axial piston motor, in-shoe design
Reduction system	Planetary reduction gear
Max. drawbar pull	5,300 kgf (11,700 lbf)
Max. travel speed(high) / (low)	4.0 km/hr (2.5 mph) / 2.2 km/hr (1.4 mph)
Gradeability	35° (70%)
Parking brake	Multi-wet disc



Swing System

Swing motor	Axial piston motor
Swing reduction	Planetary gear reduction
Swing circuit lubrication	Grease - bathed
Swing brake	Multi wet disc
Swing speed	9.6 rpm



Control

Pilot pressure-operated joysticks and pedal with detachable lever provide almost effortless and fatigueless operation.

Pilot control	Two joysticks with one safety lever (LH): Swing and arm, (RH): Boom and bucket(ISO)
Traveling and steering	Two levers with pedals
Engine throttle	Mechanical, cable type
External Lights	Two lights mounted on the boom one below the cab



Coolant & Lubricant Capacity

(refilling)	liter	US gal	UK gal
Fuel tank	120.0	31.7	26.4
Engine coolant	10.0	2.6	2.2
Engine oil	9.2	2.4	2.0
Swing device-gear oil	1.5	0.4	0.3
Final drive(each)	1.2	0.3	0.2
Hydraulic tank	70.0	18.5	15.4
Hydraulic system	120.0	31.7	26.4



Undercarriage

X-leg type center frame is integrally welded with reinforced box-section track frames. The undercarriage includes lubricate rollers, track adjusters with shock absorbing springs and sprockets, and track chain with triple grouser shoes.

Center frame	X - leg type
Track frame	Pentagonal box type
No. of shoes on each side	40
No. of carrier roller on each side	1
No. of track roller on each side	5



Operating Weight (approximate)

Operating weight, including 3,000 mm (9' 6") boom, 1,600 mm (5'3") arm, SAE heaped 0.18 m³ (0.24 yd³) backhoe bucket, lubricant, coolant, full fuel tank, hydraulic tank and the standard equipment.

Major component weight	
Upper structure	2,160 kg (4,760 lb)
Counterweight	210 kg (460 lb)
Mono boom(with arm cylinder)	310 kg (680 lb)

Operating Weight

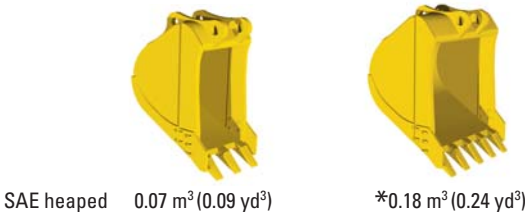
Shoes(Triple grouser)	Operating weight	Ground pressure
mm (in)	kg (lb)	kgf/cm ² (psi)
400 (15.7")	5,700 (12,570)	0.33(4.69)



Buckets

Capacity		Width		Weight	3.0m (9' 10") Boom
SAE heaped	CECE heaped	Without side cutters	With side cutters		1.6m (5'3") arm
0.07 m ³ (0.09 yd ³)	0.06 m ³ (0.08 yd ³)	315 mm(12.4")	360 mm(14.2")	84 kg(185 lb)	■
*0.18 m ³ (0.24 yd ³)	0.15 m ³ (0.20 yd ³)	705 mm(27.8")	770 mm(30.3")	137 kg(300 lb)	■

*: Standard backhoe bucket ■ Applicable for materials with density 1600 kg/m³ (2,700 lb/yd³) or less



SAE heaped 0.07 m³ (0.09 yd³)

*0.18 m³ (0.24 yd³)

Arm	Length	* 1,600 mm (5' 3")	1,900 mm (6' 3")
	Weight	210 kg (460 lb)	230 kg (510 lb)
Bucket digging force	SAE	37.7 kN 3850 kgf 9940 lbf	37.7 kN 3850 kgf 9940 lbf
	ISO	42.4 kN 4330 kgf 9550 lbf	42.4 kN 4330 kgf 9550 lbf
Arm crowd force	SAE	28.4 kN 2900 kgf 6390 lbf	25.5 kN 2600 kgf 5730 lbf
	ISO	31.9 kN 3260 kgf 7190 lbf	28.7 kN 2930 kgf 6460 lbf

*: Standard Arm(Arm weight including cylinder and linkage)



Lifting Capacities R55-7

• Boom : 3.0m(9'10") • Arm : 1.6m(5' 3") • Bucket : 0.18 m³ (0.24 yd³) SAE heaped • Shoe : 400 mm(16") triple grouser shoe, the dozer blade up with 210 kg (460 lb) Counterweight

Load point height m(ft)		Load radius								At max. reach		
		2.0m(5ft)		3.0m(10ft)		4.0m(15ft)		5.0m(15ft)		Capacity		Reach
												m (ft)
5.0m (15ft)	kg lb									*950	*950	4.08 (13.4)
4.0m (15ft)	kg lb					*990	*990			*2090	*2090	5.04 (16.5)
3.0m (10ft)	kg lb					*2180	*2180			*970	770	5.04 (16.5)
2.0m (5ft)	kg lb					*1070	*1070			*2140	1700	5.57 (18.3)
1.0m (5ft)	kg lb					*2360	*2360			*1000	630	5.81 (19.1)
Ground Line	kg lb					*2670	1510			*2200	1390	5.82 (19.1)
-1.0m (-5ft)	kg lb	*2950	*2950	*1660	*1660	*1300	1070	*1150	740	*1050	570	5.60 (18.4)
-2.0m (-5ft)	kg lb	*6500	*6500	*3660	*3660	*2870	2360	*2540	1630	*2310	1260	5.11 (16.8)
-3.0m (-10ft)	kg lb			*2320	1580	*1580	1020	*1260	710	*1090	560	4.21 (13.8)
	kg lb			*5110	3480	*3480	2250	*2780	1570	*2400	1230	
	kg lb			*2670	1510	*1770	980	*1340	690	*1140	590	
	kg lb			*5890	3330	*3900	2160	*2950	1520	*2510	1300	
	kg lb			*3560	2980	*2660	1490			*1170	680	
	kg lb			*7850	6570	*5860	3280			*2580	1500	
	kg lb			*3780	3020	*2300	1510			*1140	940	
	kg lb			*8330	6660	*5070	3330			*2510	2070	
	kg lb			*2100	*2100							
	kg lb			*4630	*4630							

• Boom : 3.0m(9'10") • Arm : 1.6m(5' 3") • Bucket : 0.18 m³ (0.24 yd³) SAE heaped • Shoe : 400 mm(16") triple grouser shoe, the dozer blade down with 210 kg (460 lb) Counterweight

Load point height m(ft)		Load radius								At max. reach		
		2.0m(5ft)		3.0m(10ft)		4.0m(15ft)		5.0m(15ft)		Capacity		Reach
												m (ft)
5.0m (15ft)	kg lb									*950	*950	4.08 (13.4)
4.0m (15ft)	kg lb					*990	*990			*2090	*2090	5.04 (16.5)
3.0m (10ft)	kg lb					*2180	*2180			*970	770	5.04 (16.5)
2.0m (5ft)	kg lb					*1070	*1070			*2140	1700	5.57 (18.3)
1.0m (5ft)	kg lb					*2360	*2360			*1000	630	5.81 (19.1)
Ground Line	kg lb					*2670	1510			*2200	1390	5.82 (19.1)
-1.0m (-5ft)	kg lb	*2950	*2950	*1660	*1660	*1300	1070	*1150	740	*1050	570	5.60 (18.4)
-2.0m (-5ft)	kg lb	*6500	*6500	*3660	*3660	*2870	2360	*2540	1630	*2310	1260	5.11 (16.8)
-3.0m (-10ft)	kg lb			*2320	1580	*1580	1020	*1260	710	*1090	560	4.21 (13.8)
	kg lb			*5110	3480	*3480	2250	*2780	1570	*2400	1230	
	kg lb			*2670	1510	*1770	980	*1340	690	*1140	590	
	kg lb			*5890	3330	*3900	2160	*2950	1520	*2510	1300	
	kg lb			*3560	2980	*2660	1490			*1170	680	
	kg lb			*7850	6570	*5860	3280			*2580	1500	
	kg lb			*3780	3020	*2300	1510			*1140	940	
	kg lb			*8330	6660	*5070	3330			*2510	2070	
	kg lb			*2100	*2100							
	kg lb			*4630	*4630							

NOTES

1. Lifting capacity are based on SAE J1097, ISO 10567.

2. Lifting capacity of the Robex Series does not exceed 75% of tipping load with the machine on firm, level ground or 87% of full hydraulic capacity.

3. The load point is a hook (standard equipment) located on the back of the bucket.

4. (*) indicates load limited by hydraulic capacity.